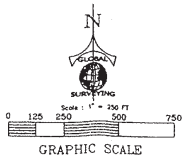
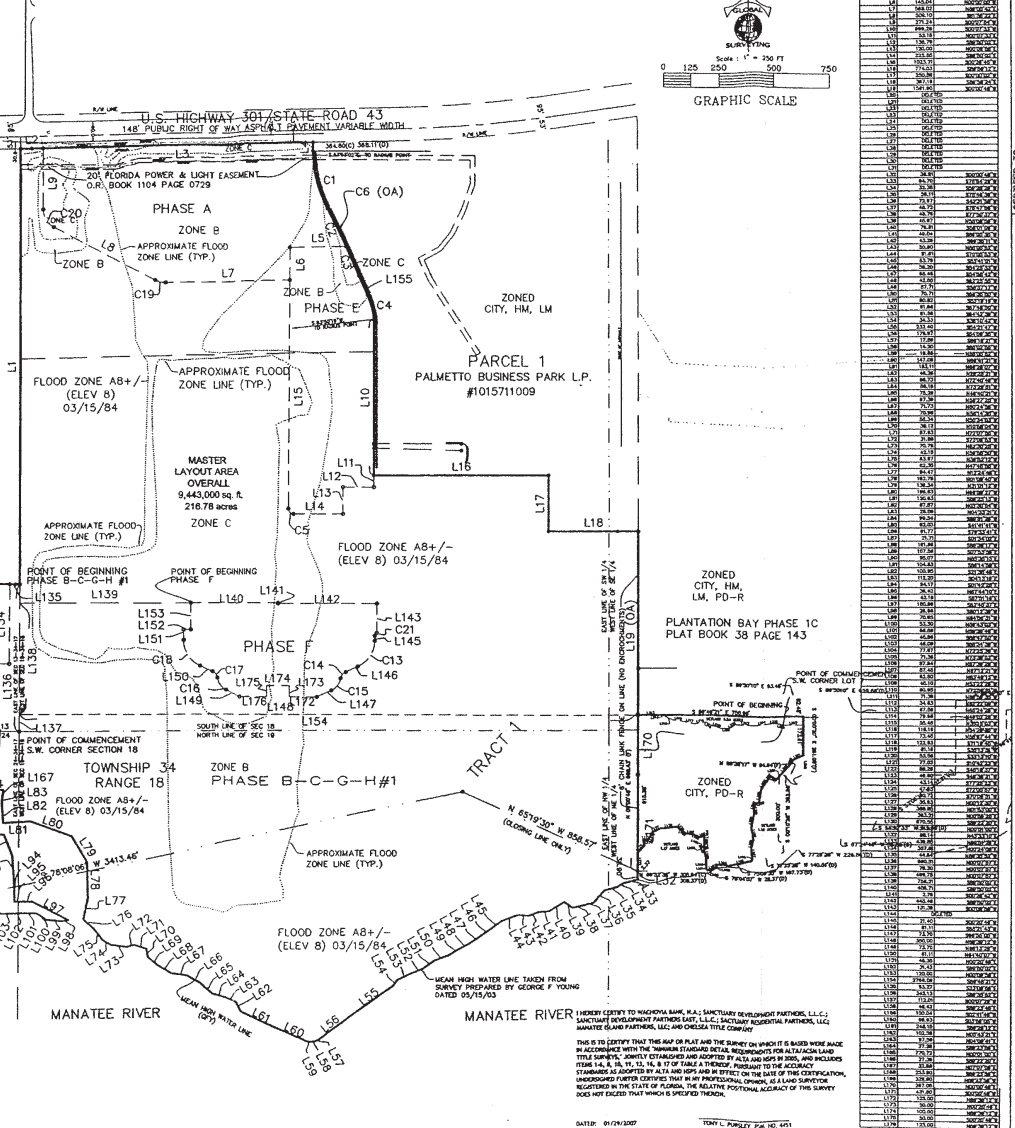


1. BOUNDARIES ARE BASED ON FURNISHED SURVEY RECORDS AND FIELD SURVEYS.
2. THE RELATIVE ERROR OF CLOSURE OF THE SURVEY IS WITHIN THE ACCEPTED TOLERANCE FOR THIS TYPE OF SURVEY.
3. THE SURVEY IS CONSIDERED TO BE A TRUTHFUL REPRESENTATION OF THE ACTUAL SITUATION.
4. THE SURVEY IS CONSIDERED TO BE A TRUTHFUL REPRESENTATION OF THE ACTUAL SITUATION.
5. THE SURVEY IS CONSIDERED TO BE A TRUTHFUL REPRESENTATION OF THE ACTUAL SITUATION.
6. THE SURVEY IS CONSIDERED TO BE A TRUTHFUL REPRESENTATION OF THE ACTUAL SITUATION.
7. THE SURVEY IS CONSIDERED TO BE A TRUTHFUL REPRESENTATION OF THE ACTUAL SITUATION.
8. THE SURVEY IS CONSIDERED TO BE A TRUTHFUL REPRESENTATION OF THE ACTUAL SITUATION.
9. THE SURVEY IS CONSIDERED TO BE A TRUTHFUL REPRESENTATION OF THE ACTUAL SITUATION.
10. THE SURVEY IS CONSIDERED TO BE A TRUTHFUL REPRESENTATION OF THE ACTUAL SITUATION.
11. THE SURVEY IS CONSIDERED TO BE A TRUTHFUL REPRESENTATION OF THE ACTUAL SITUATION.
12. THE SURVEY IS CONSIDERED TO BE A TRUTHFUL REPRESENTATION OF THE ACTUAL SITUATION.
13. THE SURVEY IS CONSIDERED TO BE A TRUTHFUL REPRESENTATION OF THE ACTUAL SITUATION.
14. THE SURVEY IS CONSIDERED TO BE A TRUTHFUL REPRESENTATION OF THE ACTUAL SITUATION.
15. THE SURVEY IS CONSIDERED TO BE A TRUTHFUL REPRESENTATION OF THE ACTUAL SITUATION.
16. THE SURVEY IS CONSIDERED TO BE A TRUTHFUL REPRESENTATION OF THE ACTUAL SITUATION.
17. THE SURVEY IS CONSIDERED TO BE A TRUTHFUL REPRESENTATION OF THE ACTUAL SITUATION.
18. THE SURVEY IS CONSIDERED TO BE A TRUTHFUL REPRESENTATION OF THE ACTUAL SITUATION.
19. THE SURVEY IS CONSIDERED TO BE A TRUTHFUL REPRESENTATION OF THE ACTUAL SITUATION.
20. THE SURVEY IS CONSIDERED TO BE A TRUTHFUL REPRESENTATION OF THE ACTUAL SITUATION.

SYMBOL	DESCRIPTION
○	Iron nail
△	Aluminum nail
□	Copper nail
◇	Steel nail
×	Wood nail
•	Iron spike
△	Aluminum spike
□	Copper spike
◇	Steel spike
×	Wood spike
○	Iron pin
△	Aluminum pin
□	Copper pin
◇	Steel pin
×	Wood pin
•	Iron rod
△	Aluminum rod
□	Copper rod
◇	Steel rod
×	Wood rod
○	Iron pipe
△	Aluminum pipe
□	Copper pipe
◇	Steel pipe
×	Wood pipe
•	Iron wire
△	Aluminum wire
□	Copper wire
◇	Steel wire
×	Wood wire
○	Iron cable
△	Aluminum cable
□	Copper cable
◇	Steel cable
×	Wood cable
•	Iron chain
△	Aluminum chain
□	Copper chain
◇	Steel chain
×	Wood chain
○	Iron link
△	Aluminum link
□	Copper link
◇	Steel link
×	Wood link
•	Iron band
△	Aluminum band
□	Copper band
◇	Steel band
×	Wood band
○	Iron strap
△	Aluminum strap
□	Copper strap
◇	Steel strap
×	Wood strap
•	Iron plate
△	Aluminum plate
□	Copper plate
◇	Steel plate
×	Wood plate
○	Iron sheet
△	Aluminum sheet
□	Copper sheet
◇	Steel sheet
×	Wood sheet
•	Iron block
△	Aluminum block
□	Copper block
◇	Steel block
×	Wood block
○	Iron cylinder
△	Aluminum cylinder
□	Copper cylinder
◇	Steel cylinder
×	Wood cylinder
•	Iron cone
△	Aluminum cone
□	Copper cone
◇	Steel cone
×	Wood cone
○	Iron sphere
△	Aluminum sphere
□	Copper sphere
◇	Steel sphere
×	Wood sphere
•	Iron cube
△	Aluminum cube
□	Copper cube
◇	Steel cube
×	Wood cube
○	Iron pyramid
△	Aluminum pyramid
□	Copper pyramid
◇	Steel pyramid
×	Wood pyramid
•	Iron prism
△	Aluminum prism
□	Copper prism
◇	Steel prism
×	Wood prism
○	Iron shell
△	Aluminum shell
□	Copper shell
◇	Steel shell
×	Wood shell
•	Iron cap
△	Aluminum cap
□	Copper cap
◇	Steel cap
×	Wood cap
○	Iron plug
△	Aluminum plug
□	Copper plug
◇	Steel plug
×	Wood plug
•	Iron nut
△	Aluminum nut
□	Copper nut
◇	Steel nut
×	Wood nut
○	Iron bolt
△	Aluminum bolt
□	Copper bolt
◇	Steel bolt
×	Wood bolt
•	Iron screw
△	Aluminum screw
□	Copper screw
◇	Steel screw
×	Wood screw
○	Iron washer
△	Aluminum washer
□	Copper washer
◇	Steel washer
×	Wood washer
•	Iron nut and bolt
△	Aluminum nut and bolt
□	Copper nut and bolt
◇	Steel nut and bolt
×	Wood nut and bolt
○	Iron nut and screw
△	Aluminum nut and screw
□	Copper nut and screw
◇	Steel nut and screw
×	Wood nut and screw
•	Iron bolt and nut
△	Aluminum bolt and nut
□	Copper bolt and nut
◇	Steel bolt and nut
×	Wood bolt and nut
○	Iron screw and nut
△	Aluminum screw and nut
□	Copper screw and nut
◇	Steel screw and nut
×	Wood screw and nut
•	Iron nut and washer
△	Aluminum nut and washer
□	Copper nut and washer
◇	Steel nut and washer
×	Wood nut and washer
○	Iron bolt and washer
△	Aluminum bolt and washer
□	Copper bolt and washer
◇	Steel bolt and washer
×	Wood bolt and washer
•	Iron screw and washer
△	Aluminum screw and washer
□	Copper screw and washer
◇	Steel screw and washer
×	Wood screw and washer
○	Iron nut and cap
△	Aluminum nut and cap
□	Copper nut and cap
◇	Steel nut and cap
×	Wood nut and cap
•	Iron bolt and cap
△	Aluminum bolt and cap
□	Copper bolt and cap
◇	Steel bolt and cap
×	Wood bolt and cap
○	Iron screw and cap
△	Aluminum screw and cap
□	Copper screw and cap
◇	Steel screw and cap
×	Wood screw and cap



LINE	LENGTH	BEARING
L1	100.00	S 89° 59' 56.00\"
L2	100.00	S 89° 59' 56.00\"
L3	100.00	S 89° 59' 56.00\"
L4	100.00	S 89° 59' 56.00\"
L5	100.00	S 89° 59' 56.00\"
L6	100.00	S 89° 59' 56.00\"
L7	100.00	S 89° 59' 56.00\"
L8	100.00	S 89° 59' 56.00\"
L9	100.00	S 89° 59' 56.00\"
L10	100.00	S 89° 59' 56.00\"
L11	100.00	S 89° 59' 56.00\"
L12	100.00	S 89° 59' 56.00\"
L13	100.00	S 89° 59' 56.00\"
L14	100.00	S 89° 59' 56.00\"
L15	100.00	S 89° 59' 56.00\"
L16	100.00	S 89° 59' 56.00\"
L17	100.00	S 89° 59' 56.00\"
L18	100.00	S 89° 59' 56.00\"
L19	100.00	S 89° 59' 56.00\"
C1	100.00	S 89° 59' 56.00\"
C2	100.00	S 89° 59' 56.00\"
C3	100.00	S 89° 59' 56.00\"
C4	100.00	S 89° 59' 56.00\"
C5	100.00	S 89° 59' 56.00\"
C6	100.00	S 89° 59' 56.00\"
C7	100.00	S 89° 59' 56.00\"
C8	100.00	S 89° 59' 56.00\"
C9	100.00	S 89° 59' 56.00\"
C10	100.00	S 89° 59' 56.00\"
C11	100.00	S 89° 59' 56.00\"
C12	100.00	S 89° 59' 56.00\"
C13	100.00	S 89° 59' 56.00\"
C14	100.00	S 89° 59' 56.00\"
C15	100.00	S 89° 59' 56.00\"
C16	100.00	S 89° 59' 56.00\"
C17	100.00	S 89° 59' 56.00\"
C18	100.00	S 89° 59' 56.00\"
C19	100.00	S 89° 59' 56.00\"

LINE	LENGTH	BEARING	CHORD	BEARING	CHORD
L1	100.00	S 89° 59' 56.00\"	100.00	S 89° 59' 56.00\"	100.00
L2	100.00	S 89° 59' 56.00\"	100.00	S 89° 59' 56.00\"	100.00
L3	100.00	S 89° 59' 56.00\"	100.00	S 89° 59' 56.00\"	100.00
L4	100.00	S 89° 59' 56.00\"	100.00	S 89° 59' 56.00\"	100.00
L5	100.00	S 89° 59' 56.00\"	100.00	S 89° 59' 56.00\"	100.00
L6	100.00	S 89° 59' 56.00\"	100.00	S 89° 59' 56.00\"	100.00
L7	100.00	S 89° 59' 56.00\"	100.00	S 89° 59' 56.00\"	100.00
L8	100.00	S 89° 59' 56.00\"	100.00	S 89° 59' 56.00\"	100.00
L9	100.00	S 89° 59' 56.00\"	100.00	S 89° 59' 56.00\"	100.00
L10	100.00	S 89° 59' 56.00\"	100.00	S 89° 59' 56.00\"	100.00
L11	100.00	S 89° 59' 56.00\"	100.00	S 89° 59' 56.00\"	100.00
L12	100.00	S 89° 59' 56.00\"	100.00	S 89° 59' 56.00\"	100.00
L13	100.00	S 89° 59' 56.00\"	100.00	S 89° 59' 56.00\"	100.00
L14	100.00	S 89° 59' 56.00\"	100.00	S 89° 59' 56.00\"	100.00
L15	100.00	S 89° 59' 56.00\"	100.00	S 89° 59' 56.00\"	100.00
L16	100.00	S 89° 59' 56.00\"	100.00	S 89° 59' 56.00\"	100.00
L17	100.00	S 89° 59' 56.00\"	100.00	S 89° 59' 56.00\"	100.00
L18	100.00	S 89° 59' 56.00\"	100.00	S 89° 59' 56.00\"	100.00
L19	100.00	S 89° 59' 56.00\"	100.00	S 89° 59' 56.00\"	100.00
C1	100.00	S 89° 59' 56.00\"	100.00	S 89° 59' 56.00\"	100.00
C2	100.00	S 89° 59' 56.00\"	100.00	S 89° 59' 56.00\"	100.00
C3	100.00	S 89° 59' 56.00\"	100.00	S 89° 59' 56.00\"	100.00
C4	100.00	S 89° 59' 56.00\"	100.00	S 89° 59' 56.00\"	100.00
C5	100.00	S 89° 59' 56.00\"	100.00	S 89° 59' 56.00\"	100.00
C6	100.00	S 89° 59' 56.00\"	100.00	S 89° 59' 56.00\"	100.00
C7	100.00	S 89° 59' 56.00\"	100.00	S 89° 59' 56.00\"	100.00
C8	100.00	S 89° 59' 56.00\"	100.00	S 89° 59' 56.00\"	100.00
C9	100.00	S 89° 59' 56.00\"	100.00	S 89° 59' 56.00\"	100.00
C10	100.00	S 89° 59' 56.00\"	100.00	S 89° 59' 56.00\"	100.00
C11	100.00	S 89° 59' 56.00\"	100.00	S 89° 59' 56.00\"	100.00
C12	100.00	S 89° 59' 56.00\"	100.00	S 89° 59' 56.00\"	100.00
C13	100.00	S 89° 59' 56.00\"	100.00	S 89° 59' 56.00\"	100.00
C14	100.00	S 89° 59' 56.00\"	100.00	S 89° 59' 56.00\"	100.00
C15	100.00	S 89° 59' 56.00\"	100.00	S 89° 59' 56.00\"	100.00
C16	100.00	S 89° 59' 56.00\"	100.00	S 89° 59' 56.00\"	100.00
C17	100.00	S 89° 59' 56.00\"	100.00	S 89° 59' 56.00\"	100.00
C18	100.00	S 89° 59' 56.00\"	100.00	S 89° 59' 56.00\"	100.00
C19	100.00	S 89° 59' 56.00\"	100.00	S 89° 59' 56.00\"	100.00

CERTIFIED TO:
 ALTA/ACSM LAND TITLE SURVEY IN
 SECTIONS 18 & 19, TOWNSHIP 34 SOUTH, RANGE 18 EAST
 SECTIONS 13 & 24, TOWNSHIP 34 SOUTH, RANGE 17 EAST
 MANATEE COUNTY, FLORIDA

GLOBAL SURVEYING OF BRADENTON, L.L.C.
 CORPORATE HEADQUARTERS
 10001 BRADENTON AVENUE, SUITE 100
 BRADENTON, FLORIDA 34203
 PHONE: (813) 740-0000
 FAX: (813) 740-0001
 WWW: GLOBALSURVEYING.COM

DATE: 01/18/2007
 DRAWN BY: M
 SCALE: 1" = 250'

DATE: 01/18/2007
 DRAWN BY: M
 SCALE: 1" = 250'